

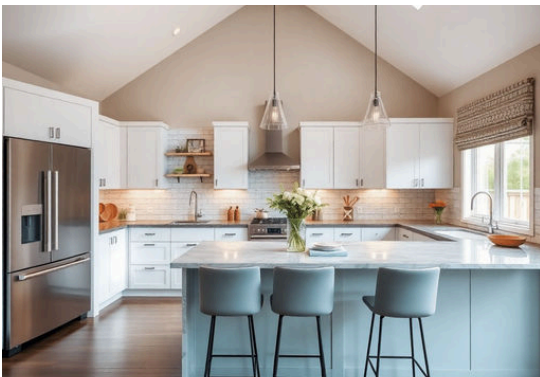


MyOwnCottage.ca

# Welcome TO YOUR CUSTOM HOME!

## FEATURES ✨

- 646 Sq. Ft.
- 1 Bedroom
- 1 Bathroom
- Tranquil, Cozy Living!



**The Kingswood** is a beautifully crafted prefab home that combines classic cottage charm with modern functionality, designed to bring comfort and style to Ontario living.



646 sq. ft.



1 Bedroom



1 Bathroom

**Next Step:** *Let's book your free site visit and get started!*



**Book Your Online Consultation**



**Call Us Directly: (705) 345-9337**

SECURE YOUR DREAM HOME!

[HTTPS://MYOWNCOTTAGE.CA/KINGSWOOD/](https://myowncottage.ca/kingswood/)

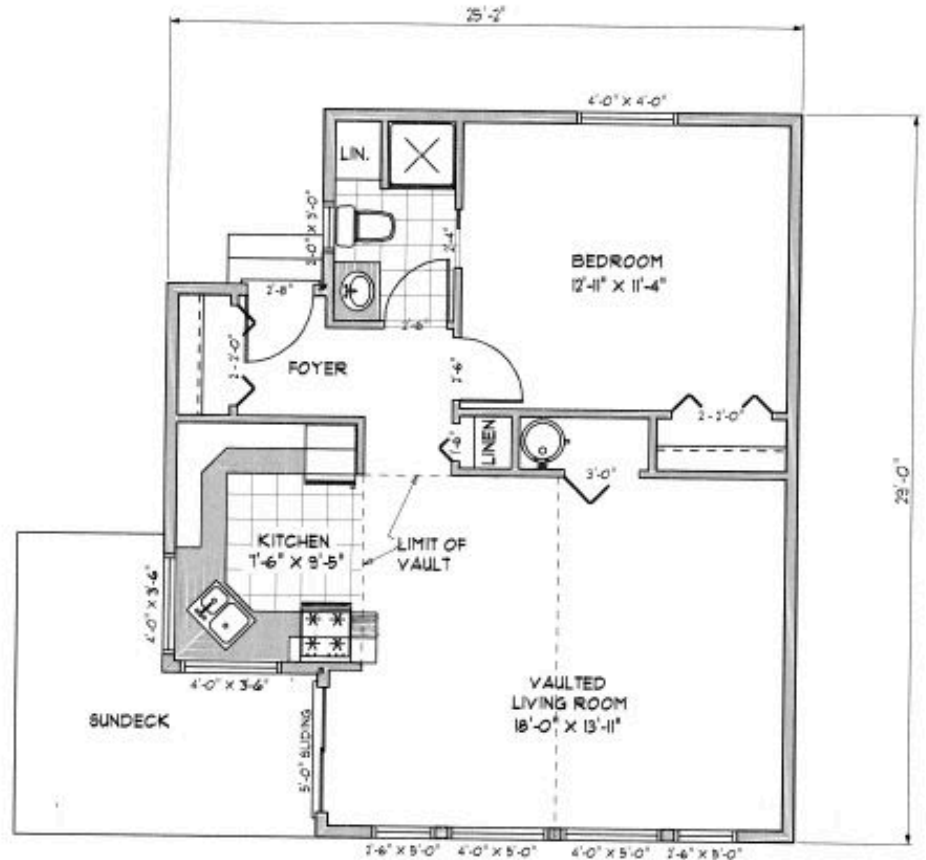


# Standard Floor Plan

646 SQ. FT | 1 BEDROOM | 1 BATHROOM

## PROPERTY DESCRIPTION

With an inviting layout, spacious living areas, and thoughtful design details, **the Kingswood** blends warmth, flexibility, and enduring appeal — making it a perfect fit for year-round enjoyment.



✓ Every home we build is fully compliant with the Ontario Building Code and all applicable local municipal regulations. 🍁 📍

# COMMON QUESTIONS

*Answered*



🔑 **Is this home mortgageable?**

**Yes!** We work with prefab-experienced brokers who can help you navigate lending requirements for modular homes.



**What about zoning and approvals?**

**We'll help you** evaluate your site and connect you with experts who understand local zoning, variances, and permit needs.



**What if my land is remote or rural?**

**No problem.** We provide planning guidance for utility connections, delivery access, and infrastructure needs.



**Can I change the design?**

**Absolutely!** You can personalize finishes and choose structural upgrades.





# WE BUILD YOU THRIVE

## YOUR CONSTRUCTION AGENCY ✨

### EASY NEXT STEPS & SERVICES:



Book Your Site Visit!



Design & Build!



Prefabrication Begins!

***Build with confidence! Quality, reliability, and innovation—your trusted partner for exceptional construction solutions!***



Questions? Call Us or Visit Our Website!

📞 Phone: 705-345-9337

🌐 <https://myowncottage.ca>

