



MyOwnCottage.ca

# Welcome TO YOUR CUSTOM HOME! ◆◆◆

## FEATURES ✨

- 988 Sq. Ft.
- 2 Bedrooms
- 1 Bathroom
- Open-Concept Living!



**The Waters Edge** is our signature 2-bedroom prefab home model for lakefront and nature-facing properties — built for comfort, efficiency, and effortless connection to the outdoors.



988 sq. ft.



2 Bedrooms



1 Bathroom



**Next Step:** *Let's book your free site visit and get started!*



**Book Your Online Consultation**



**Call Us Directly: (705) 345-9337**

SECURE YOUR DREAM HOME!

[HTTPS://MYOWNCOTTAGE.CA/WATERS-EDGE/](https://myowncottage.ca/waters-edge/)

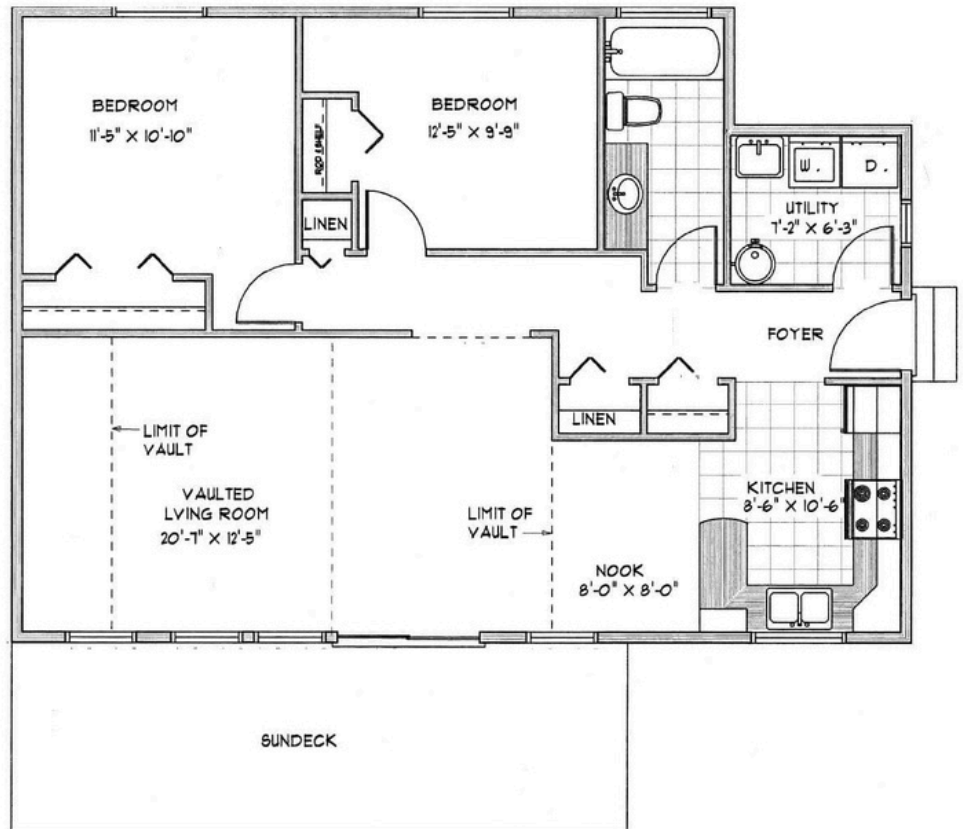


# Standard Floor Plan

988 SQ. FT | 2 BEDROOMS | 1 BATHROOM

## PROPERTY DESCRIPTION

*The Water's Edge is a beautiful 4-season ready retreat. Absolutely perfect for lakeside living, modern simplicity, or compact luxury.*



✓ Every home we build is fully compliant with the Ontario Building Code and all applicable local municipal regulations. 🍁 📍



# COMMON QUESTIONS

## *Answered*

### **Is this home mortgageable?**

**Yes!** We work with prefab-experienced brokers who can help you navigate lending requirements for modular homes.

### **What about zoning and approvals?**

**We'll help you** evaluate your site and connect you with experts who understand local zoning, variances, and permit needs.

### **What if my land is remote or rural?**

**No problem.** We provide planning guidance for utility connections, delivery access, and infrastructure needs.

### **Can I change the design?**

**Absolutely!** You can personalize finishes and choose structural upgrades.



# WE BUILD YOU THRIVE

## YOUR CONSTRUCTION AGENCY ✨

### EASY NEXT STEPS & SERVICES:



Book Your Site Visit!



Design & Build!



Prefabrication Begins!

***Build with confidence! Quality, reliability, and innovation—your trusted partner for exceptional construction solutions!***



Questions? Call Us or Visit Our Website!

📞 Phone: 705-345-9337

🌐 <https://myowncottage.ca>

